

Puspa Shrestha

Best Quality Resource Site for Class 11 And 12 Students
(Based on Updated Curriculum 2077)

Puspa Shrestha

Best Quality Resource Site for Class 11 And 12
Students (Based on Updated Curriculum 2077)

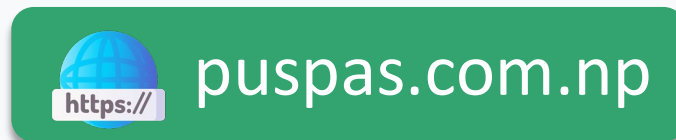


PDF Collections

Notes
Books
Model Questions

This PDF was downloaded
from puspas.com.np

Visit our website for more
materials.



Follow us on:



EXPERIMENT NO. 7

Date: 20/7/21

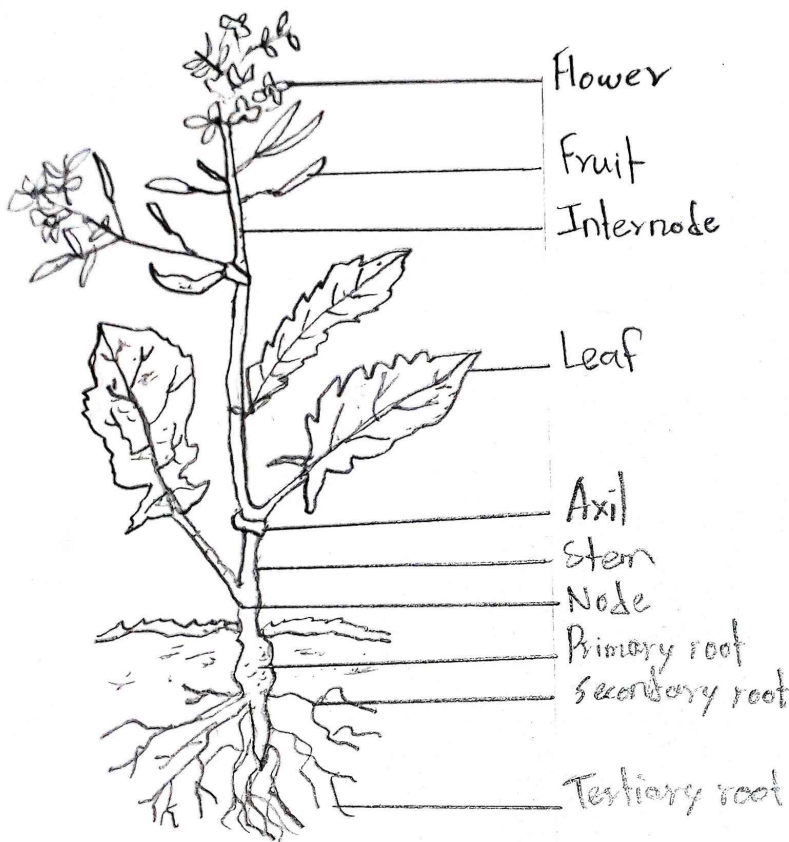
AIM: TO STUDY VEGETATIVE AND REPRODUCTIVE STRUCTURE OF DICOT PLANT (MUSTARD PLANT)

COMMENTS

1. Mustard is a dicotyledonous plant that grows in the soil having sufficient water, minerals and air.
2. It is an annual herb cultivated for vegetable and oil.
3. It bears well developed tap root system.
4. Stem is green, herbaceous, erect, slender, branched and consists of nodes and internodes.
5. Stem tip ends at terminal bud and the branches arise from axillary buds.
6. The leaves are green, petiolate, exstipulate, lyrate, alternately arranged on the stem. The leaf blade bears unicosate reticulate venation.
7. The inflorescence of the mustard is typical raceme.
8. The flowers are small, ebracteate, yellow coloured and developed from the floral buds.
9. The mustard flower consists of a short stalk called pedicel and a set of all floral whorls such as calyx, corolla, androecium and gynoecium.
10. Calyx is the outermost whorl of the flower that consists of four green leaves like sepals.
11. The ~~corolla~~ corolla is the second whorl of the flower that consists of four free petals. Each petals has a narrow lower part the claw and broad part upper part called limb.
12. The third whorl of flower is called androecium that consists

TO STUDY VEGETATIVE AND REPRODUCTIVE STRUCTURE OF DICOT PLANT (MUSTARD PLANT)

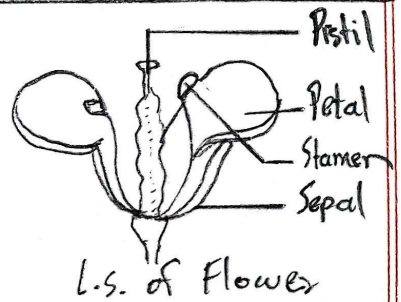
Roll No : 11
Date : 20/11/18



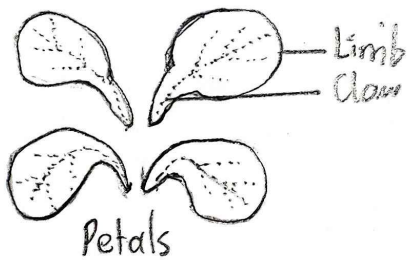
A whole Mustard Plant

Classification

Kingdom	- Plantae
Division	- Tracheophyta
Sub-division	- Spermatophyta
Class	- Angiospermae
Sub-class	- Dicotyledonae
Family	- Brassicaceae
Genus	- <u>Brassica</u>
Species	- <u>campestris</u>
Common name	- Mustard



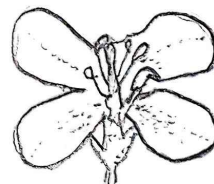
L.S. of Flower



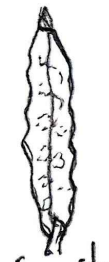
Petals



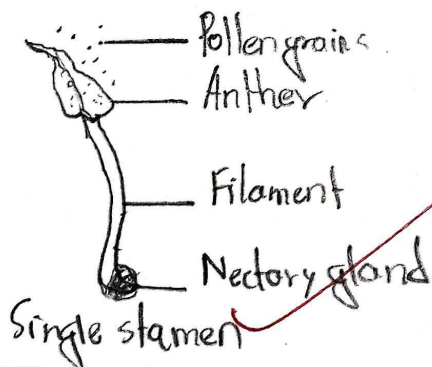
Sepals



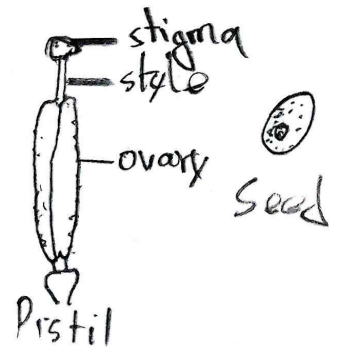
An entire flower



fruit



Single stamen



Pistil

Sobha
8/11/18

of six free stamens. Out of six stamens two outer stamens are short while the four inner are long. The stamens constitute the male reproductive part of a flower. Each stamen consists of a long filament and a sac-like anther at tip.

13. Gynoecium constitutes the female reproductive organ. Pistil consists of two carpels and is divided into three parts: basal swollen ovary, an erect style and bilobed stigma.
14. The fruit is silique type which appears cylindrical and elongated.